



OUR LADY OF SORROWS

1403-A California Avenue
Wahiawa, HI 96786

Phone: (808) 621-5109

Fax: (808) 622-5073

Emergency: (808) 241-0302

Email: ols@hawaiiantel.net

Web: www.olswahiawa.org

OFFICE HOURS

Monday - Friday
8:00 AM - 4:00 PM

MASS SCHEDULE

Daily

Monday - Saturday
7:00 AM

Weekend

Saturday (anticipatory)
5:00 PM

Sunday

7:00 AM & 9:00 AM

Ilocano Mass

Last Sunday at 5:00 PM

RECONCILIATION

Saturday at 4:00 - 4:45 PM
or anytime by appointment

Mission Established
1928

Parish Established
1939

SECOND SUNDAY OF LENT

Weekend of February 28-March 1, 2015



MESSAGE FROM FR. RICHARD

Dear Sisters and Brothers,

The refrain of the responsorial psalm for Ash Wednesday was "Be merciful, O Lord, for we have sinned." Words like that keep coming up all during Lent. The prophet Joel tells us, "Rend your hearts not your garments." We are to tear open our sinful weak hearts and let the healing mercy of the Lord flow over them.

The principal way we do that during Lent and throughout the year is in confession, the Sacrament of Penance, when God forgives us and reconciles us to himself. Serious sin is called "mortal" because it kills our relationship with God. We are cut off from him, unable to receive him in Holy Communion, condemned to hell if we were to die before confession. Less serious sin, "venial" sin does not cut us off from God but it weakens our relationship with him, eating away at it little by little.

We have confession every Saturday from 4:00 to about 4:40. During Lent I will be in the Reconciliation Room for confessions Sunday mornings between the 7:00 and 9:00 Mass. In the seasons of Advent and Lent we have a communal celebration of the sacrament. The Lenten Penance service is this Tuesday at 7:00 PM. There will be several priests available as confessors.

In the bulletin this week you are receiving a pamphlet that summarizes well what we as Catholics believe about the Sacrament of Reconciliation. There is also an examination of conscience that you can use to prepare for confession.

We also heard the words of St. Paul on Ash Wednesday, "In an acceptable time I heard you, and on the day of salvation I helped you. Behold, now is a very acceptable time; behold, now is the day of salvation." Now, this Lent, this week is a good time to turn from sin and let God's loving mercy flow over us. Jesus is waiting for us. Let's not wait any longer to encounter him in confession.

Fr. Richard, ss.cc.



MARCH 3, 2015
7:00 PM
OLS Church

WEEKLY CALENDAR

- Feb 28 (Sat) 2nd Sunday of Lent**
- Mar 1 (Sun) 2nd Sunday of Lent**
 8:00am Individual Confession
 10:30am RE Recruitment Mtg (PH)
 10:30am RE Classes
 10:30am RCIA Class
- Mar 2 (Mon) Lenten Weekday**
 6:30pm +Carmencita Fagarang Wake Svc (MMP)
 6:30pm EDGE
 7:00pm EPIC YAM Faith Sharing
- Mar 3 (Tues) St Katharine Drexel**
 11:00am +Carmencita Fagarang Funeral Mass (OLS)
 7:00pm OLS Lenten Penance Service
 7:00pm Adult Bible Study (Lib)
- Mar 4 (Wed) St Casimir**
 10:00am Central Oahu Vicariate Mtg (St. Michael)
 6:30pm Youth Ministry Class (Rm 8)
 6:30pm Kupuna Ministry Mtg (PH)
- Mar 5 (Thurs) Lenten Weekday**
 8:00am Wahiawa Ministers' Mtg
 9:00am Craft Guild (PH)
 6:00pm Parish Leadership Team Mtg (Conf Rm)
 7:00pm OLS Prayer Group (Lib)
- Mar 6 (Fri) Lenten Weekday / First Friday**
 7:00am Mass / Eucharistic Adoration
 9:00am Benediction
 7:00pm Stations of the Cross
- Mar 7 (Sat) Sts Perpetua & Felicity**
 8:15am Confirmation I departs OLS for Day of
 Recollection (Benedictine Monastery)
 9:00am Food Pantry
 10:00am Respect Life Committee Mtg (PH)
- Mar 8 (Sun) 3rd Sunday of Lent**
 8:00am Individual Confession
 10:30am RE Classes
 10:30am RCIA Class
 1:00pm Altar Society Mtg (PH)

*OLS = Our Lady of Sorrows / CH = Church / PH = Parish Hall / Lib = Library / Sch = School
 MMP = Milliani Mortuary Park / WGH = Wahiawa General Hospital

OBITUARY: MAY THEY REST IN PEACE



- + Carmencita Fagarang**
 Mar. 2 6:30pm Wake Svc – MMP
 Mar .3 11:00am Funeral Mass – OLS
- +Venancio Lime**
 Mar. 17 12:00Nn Funeral Svc – MMP
- +Felix Francisco**
 Mar. 24 6:30pm Wake Svc – MMP
 Mar. 25 11:00am Funeral Mass – OLS
- +Ursula Arucan**
 Mar. 27 6:30pm Wake Svc – MMP
 Mar. 28 9:30am Funeral Mass – OLS

LENTEN RECONCILIATION SERVICES

- Central Oahu Vicariate
 All Services begin at 7:00 PM
- Mar. 2 Our Lady of Good Counsel
- Mar. 3 Our Lady of Sorrows



TODAY'S READINGS

[Liturgical Color: Violet]

Genesis 22:1-2, 9a, 10-13, 15-18
 I will bless you abundantly and make
 your descendants as countless as the
 stars of the sky.

Romans 8:31b-34
 If God is for us, who can be against us?

Mark 9:2-10
 This is my beloved Son, listen to him.

NEXT SUNDAY'S READINGS [Liturgical Color: Violet]
 Exodus 20:1-17 · 1 Corinthians 1:22-25 · John 2:13-25

STEWARDSHIP FOR THE WEEKEND OF February 21-22, 2015

SUNDAY COLLECTIONS	5,177.23
VOTIVE CANDLES	208.50
BAPTISMS, FUNERALS, BLESSINGS, ETC	600.00
ASH WEDNESDAY	578.70
BUILDING FUND	30.00
PROPERTY INSURANCE	552.00
STATIONS OF THE CROSS	30.00
YOUTH MINISTRY	15.00
E.P.I.C. MINISTRY	90.25
SPECIAL DONATIONS	200.00
MASS INTENTIONS	390.00

MAHALO FOR YOUR GENEROSITY!!!

Offertory Envelopes: Please call the bookkeeper at
 621-5109 ext. 9722 if you are in need of a new box.

Church Work Day Saturday, March 21, 2015 8:30 AM—12:00 Noon



It's been a while since our church has
 been cleaned. We would like to prepare
 the church for our Easter celebration.
 We will have a church work day on
March 21st beginning at 8:30 AM.
 Please bring sponges, buckets, rags, etc.
 Lunch will be served. We will have sign-
 ups on the parish lanai next weekend.

Oahu 2015 Island Leadership Retreat Saturday, March 21, 2015 8:30 AM—6:00 PM St. Stephen Diocesan Center \$15.00 (deadline Mar. 4)

During this retreat, you will spend time discovering and
 reflecting on the unique talents and gifts that God has
 given to each of us. We will explore the many ways in
 which you currently use your talents in all aspects of
 your life. We will then look at how you can use these
 talents more intentionally in your ministry and further
 the love of God to each and everyone you serve. For
 more info or to register please contact the parish office at
 621-5109 ext. 9720 by March 4.

"There are many gifts but the same Spirit" – 1 Cor 12:4

RELIGIOUS EDUCATION CORNER

Shirley Caban, Religious Education Coordinator
(621-5109, ext. 9723)

Parishioners who expressed an interest in committing their time and talent to the Religious Education Program are invited to attend an orientation/meeting on **March 1, 2015 at 10:30 AM** in the parish hall.

Adult Bible Study – “Mark-Getting to Know Jesus”

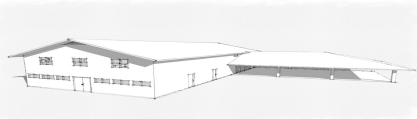
Join in a six-week, parish-wide Bible study, “Mark-Getting to Know Jesus” beginning **February 17th**. The study will use a study program from Loyola Press and will meet in the library Tuesday evenings from 7:00 PM to 8:30 PM. No special training or knowledge is needed, but a Bible is recommended. A \$10.00 fee is required to cover the cost of study materials. To sign up or for more information, call Shirley.

stations
of the
cross



**Fridays of Lent
7:00 pm**

The Knights of Columbus will once again sponsor a Cook-out & Fellowship at the Parish Hall after the Stations of the Cross. Donation: \$5.00



New Parish Hall & OLS Capital Campaign

Development Committee members will be on the lanai after each Mass to provide you with information, pledge forms, envelopes – and to answer any questions you may have about the new parish hall and OLS capital campaign.

Pledge forms—Pledge forms should be filled out completely. Forms may be given to the members of the Development Committee or mailed or dropped off at the parish office.

Payments—Mail or drop off your payments at the parish office. Envelopes are available on the parish lanai. You may also make payments automatically online using “WeShare” on our olswahiawa.org website. If you would like to do this and do not have a computer please see a Development Committee member on the lanai.

**DO NOT PLACE YOUR PLEDGE OR PLEDGE PAYMENTS
INTO THE COLLECTION.**

Save the Date

**2015 Diocese of Honolulu-Oahu Faith Formation Conference
June 19-20, 2015
St. Joseph Church/School, Waipahu**

There will be **No** car blessings between the Sunday morning Masses during Lent. Fr. Richard will be hearing individual confessions at that time.

MISSION STATEMENT

Our Lady of Sorrows Church is a Catholic, faith-filled community united and founded on the teachings and love of Jesus Christ to serve the needs of all parishioners and, through its ministries, to foster and nurture their growth in faith.

Our Lady of Sorrows Church believes in stewardship as a way of Christian living. As stewards, it is our responsibility to give back to God the best that He has given us, by giving of our time, talent and treasure.

As a unified and welcoming parish of the Universal Church, we reach out to all of God's people through education, through social action, through worship and through proclaiming and living the Gospel of Jesus Christ.

PARISH STAFF

Fr. Richard McNally, ss.cc.
Pastor
ext. 9721

Celestino Emwalu
Deacon

Janice Vannatta
Office Manager
ext. 9720

Betty Gomes
Bookkeeper
ext. 9722

Shirley Caban
Religious Ed Coordinator
ext. 9723

Kainoa Fukumoto
Music & Liturgy Coordinator
ext. 4337

Rani Laurel
Liturgy Coordinator
ext. 4337

Herman Walker
Property Custodian

Barbara Walker
Housekeeper

Carmen Adams
Groundskeeper

Joanie Ramones
Chairperson, Pastoral Council

Jack Kampfer
Chairperson, Finance Committee